



Griswold Public Schools

211 Slater Avenue
Griswold, Connecticut 06351

Tel: (860) 376-7600 Fax: (860) 376-7607

Sean P. McKenna, Superintendent
Alisha Stripling, Business Manager

Susan E. Rourke, Director, Curriculum, Instruction and Assessment
Christopher C. Champlin, Director, Special Education & Pupil Services

June 2nd, 2020

Dear GPS:

Here are today's updates!



GPS SCHOOL REOPENING SURVEY FOR PARENTS & GUARDIANS ON SCHOOL REOPENING

GPS PARENTS & GUARDIANS: Please take a few minutes to complete this anonymous survey regarding the different potential scenarios with school reopening for the 2020-2021 school year. Your input is very important to us!!!!

To access this survey, click [here](#). You can also access the survey on our School Closure Information & COVID-19 Resource Page.

Thank you!

GRAB & GO MEAL DISTRIBUTION



Grab & Go Meals will be offered on **Monday, Wednesday & Friday only**. There will be no Grab & Go on Tuesday or Thursday. Grab & Go runs from 10 am - 2 pm at GMS.

HOW DO WE RETRIEVE PERSONAL ITEMS NOW THAT SCHOOL IS OFFICIALLY CLOSED? HOW DO WE RETURN BOOKS, UNIFORMS, AND OTHER SCHOOL-OWNED ITEMS?

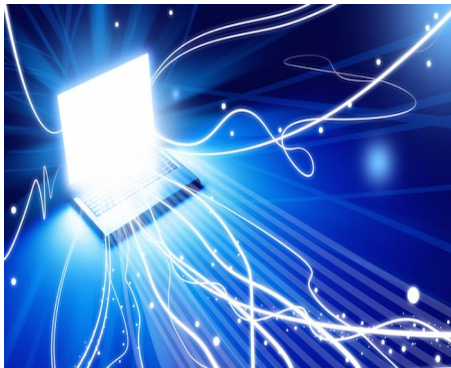


We have finalized our plan and dates. To learn more, please click [here](#). It is important to note that you will receive more specific information from the individual schools.

PLEASE MARK YOUR CALENDARS!!!



THE LAST DAY OF SCHOOL FOR GPS STUDENTS IS **JUNE 17TH, 2020**, WHICH IS CONSISTENT WITH OUR SCHOOL YEAR CALENDAR. BECAUSE OF THE UNUSUAL SCHOOL CLOSURE PERIOD AND THE DIFFERENT END OF THE YEAR ACTIVITIES, THERE HAS BEEN CONFUSION ABOUT THE LAST DAY FOR STUDENTS. IF YOU HAVE SPECIFIC QUESTIONS, PLEASE CONTACT ONE OF OUR SCHOOLS.



INTERNET CONNECTION

The State of Connecticut is committed to helping students and families maintain strong Internet connection during this period of school closure.

Please visit our Technology Section on our School Closure & COVID-19 Resource page to review these resourceful documents:

1. Increased Access to Internet Coverage for Connecticut Residents--[click here](#).
2. T-Mobile for Education in Connecticut--[click here](#).

IMPORTANT INFORMATION ABOUT OUR BUILDINGS AND GROUNDS

Our buildings are closed to the public, and we are not honoring any facilities requests at this time.

While our grounds are open to the public for walks and jogs, groups are prohibited from gathering on campus at any time, for any reason, due to the State of Connecticut Executive Orders. In short, there should be no informal gatherings of groups of individuals (large or small) for gatherings and games. Thank you for your cooperation.





FREE LIVE ONLINE PARENTING CLASSES

Get started finding Peace at Home

STEP 1: Choose which is best for you

- **Interactive Live Online Classes** Get answers to your questions on the spot
- **Recorded Classes** On-demand recorded versions of our live, interactive courses
- **Flash Classes** 15 minutes or less

STEP 2: Visit our class list page at peaceathomeparenting.com/get-started and review the list of upcoming classes under the type of class that best fits your schedule

STEP 3: Click on the **Register** or **Buy Now** button and complete registration questions

STEP 4: Enter **PEACE2020** discount code in place of payment

That's it! You will receive an e-mail confirmation with instructions for your next steps or a link to the class you chose. LIVE CLASSES will send reminders leading up to date of the class.

Learn more at
PeaceAtHomeParenting.com

With each class you will receive:

- Parent handouts you can download and print
- Access to our private, monitored Facebook group where you can get answers and feedback from other caring parents like yourself and Peace at Home experts
- Access to Free monthly online Q&A sessions to follow up on your new approaches

And if you sign up for a live, online class and miss it – we will send you access to a recording of that class in just a day or two.

Sponsored by
Idols Program
at Griswold
Elementary School

PEACE AT HOME RESOURCES AVAILABLE TO ALL GRISWOLD FAMILIES

The Peace at Home mission is to connect parents with inspiring experts, so that parents can easily gain the skills and support they need to build positive, peaceful and playful families.

Sign up through a smartphone, tablet or computer. Select the parenting class in the format that works for you. There are interactive, live online classes so you can ask the teacher questions on the spot. Live classes meet at a certain time on a certain day, and you receive emails to remind you to join. Or you can watch or just listen to an on-demand recorded class any time, right when you need some help.

On the run? Listen to a "Flash Class" that is 15 minutes or less. Full-length recorded classes are more in-depth and last 30–45 minutes.

Sign in information:

<https://www.peaceathomeparenting.com/idols-program/>

Subscription Code is PEACE2020

THE CONNECTICUT STATE DEPARTMENT OF EDUCATION IS OFFERING ON-LINE OPPORTUNITIES TO SUPPORT FAMILIES DURING THIS SCHOOL CLOSURE PERIOD.



[Please click here](#) to learn about these opportunities. Once you arrive on the page, you will have to scroll down to explore the different offerings.

Social Services in Griswold

SOCIAL SERVICES RESOURCES

ADDITIONAL QUESTIONS?
VISIT US AT: THE GRISWOLD YOUTH CENTER (GYC)
68 ASHLAND STREET, JEWETT CITY - OFFICE HOURS M-F 2-5 PM

griswoldREC.org
#loveOURresidents

DIAL 860.376.7040 or ucfs.org
 medical services - women's health
 dental health - behavioral health
 school-based health centers - eldercare
 pharmacy - billing - insurance
 mental health - substance use
 case management

DIAL 860.425.6611 or tvcca.org
 case management services - childcare
 preschool - employment - training
 energy assistance - financial education
 housing - section 8 rental assistance
 senior nutrition program - meals on wheels
 senior volunteer services - WIC

DIAL 2-1-1 or 211.ct.org
 food - mental health - youth
 health care - housing - income
 substance use - transportation
 utility assistance - crisis
 older & elderly assistance
 legal assistance - re-entry

CHILD CARE
 Little Log School House - (860) 376-4975
 TVCCA Head Start - (860) 889.1365
 Nurturing Kids Childcare Center - (860) 376-1377
 Care 4 Kids - 1-888-214-5437
 Birth to Three - 1-800-505-1000
 GES Before/Aftercare: Carelot: 860-367-2313 or carelot.net
 Griswold Youth Center Afterschool Club - 860.376.7026

PARENT INFO
 Health Insurance: accesshealthct.com or 1-855-805-4325
 Eyeglasses for Children - Lisbon Lions Club on Facebook
 Local Addiction Support Group - Matt's Mission : 860.917.6348
 Addictive Behavior Smart Recovery - Voluntown YSB - 860.376.2226
 Christmas Help or School Supplies @ GYC - 860.376.7026
 Read to Grow! Free Books @ GYC - 860.376.7026
 ComMunity Services or Internships @ GYC - 860.376.7026
 GES Retention Referred Tutoring @ GYC - 860.376.7026
 Car Seat Checks: American Ambulance in Norwich or L&M Hospital
 Safe-Kids CT: ctsafekids.org

HOME HEATING ASSISTANCE
 CT DDS through TVCCA -
 860.425.6681 or 860.889.1365 or 211 or ct.gov/staywarm
 Soldiers, Sailors & Marines Relief Fund - 860.886.8557
 Project Warm-Up - CART or United Way - 860.464.6012
 Salvation Army - 860.889.2329
 Clergy Fuel Bank - 860.823.3753

WATERFORD COUNTRY SCHOOL
 Outpatient Clinic for Children
 Ages 3 to 18 - trauma - mental health - behavioral issues
 860.886.7500 x310

CT DEPT OF SOCIAL SERVICES
 SNAP - Medical - HUSKY - Family Planning
 Cash Assistance - Medicare Savings
 Apply for Benefits : <https://portal.ct.gov/DSS>

ENERGY ASSISTANCE:
 Griswold Senior Center
 (Intake for TVCCA) : 860.376.2604

FOOD ASSISTANCE
 St. Mary's Food Pantry: 860.376.2044
 (2&4th Tuesday of the Month 10-11 am & 3-4 pm)
 Gemma Moran Mobile Food Pantry
 @ St. Mary's Food Pantry (3rd Wed of Month)
 Feed the Need - Lighthouse Church
 @ GYC (2&4th Tuesday of the Month)

ALL OTHER RESOURCES NOT RELATED TO YOUTH & FAMILY SERVICES CALL: TINA FALCK @ GRISWOLD SENIOR CENTER - 860.376.2604



Griswold Elementary School

**IMPORTANT UPDATES REGARDING PRESCHOOL
AND KINDERGARTEN REGISTRATION FOR THE
2020-2021 SCHOOL YEAR.**

GES has moved their registration packet online. To access the packet, [please click here](#).

You can download and complete each form electronically. Then email them back to: jcaviness@griswoldpublicschools.org.

Any additional documents (birth certificate, proofs of residency, drivers license, physical) may also be sent here by scanning or taking a photo.

We understand that getting your child's physical during this time may not be possible. We will still process the registration, but we will need the physical to be done before school starts in August. Please be sure to include your child's name in the subject line of each email sent. This will ensure we can easily keep everyone's packet together.

Thank you so much for your understanding and patience during this time.

School Contact Information

Although our schools are currently closed to the public during this school closure period, we are very much available and willing to assist you. Know that our School Nurses are also here to help. Here are the points of contact:

Griswold Elementary School
Phone: 860-376-7610
Joe Bordeau, Principal:
jbordeau@griswoldpublicschools.org
Jackie Love, Assistant Principal:
jlove@griswoldpublicschools.org
Tonia Soper, School Nurse
tsoper@griswoldpublicschools.org

Griswold Middle School
Phone: 860-376-7630
Glenn LaBossiere, Principal:
glabossiere@griswoldpublicschools.org
Louis Zubek, Assistant Principal:
lzubek@griswoldpublicschools.org
Renee Normandie, School Nurse
rnormandie@griswoldpublicschools.org

| | |
|--------------------------|---|
| | <p>Griswold High School Phone 860-376-7640 Erin Palonen, Principal epalonen@griswoldpublicschools.org Marceline Macrino, Assistant Principal mmacrino@griswoldpublicschools.org Denise Tedeschi, School Nurse dtedeschi@griswoldpublicschools.org</p> |
| Continuous Learning Plan | <p>We continue to monitor, adjust and implement our "Continuous Learning Plan." Should you have any questions about our plan, please contact Mrs. Susan Rourke, Director of Curriculum, Instruction & Assessment at srourke@griswoldpublicschools.org</p> |
| Technology | <p>All technology concerns, questions, and requests: please contact Jill Curioso at jcurioso@griswoldpublicschools.org.</p> |

We hope that you are all safe and well.

Sincerely yours,



Sean P. McKenna,
Superintendent of Schools