



# Griswold Public Schools

211 Slater Avenue  
Griswold, Connecticut 06351

Tel: (860) 376-7600 Fax: (860) 376-7607

Sean P. McKenna, Superintendent  
Alisha Stripling, Business Manager

Susan E. Rourke, Director, Curriculum, Instruction and Assessment  
Christopher C. Champlin, Director, Special Education & Pupil Services

June 1st, 2020

Dear GPS:

Here are today's updates!



## GPS SCHOOL REOPENING WORK GROUP

GPS has assembled a School Reopening Work Group that consists of administrators, teachers, faculty and staff, parents, union leaders, and community & town partners. The purpose of this group is to begin studying, analyzing, discussing, and planning for school reopening for the 2020-2021 school year. Please know that while there are many unknowns at this point and time, we have begun this necessary, important work for our district.

We have had our kick-off meeting last week, and we will continue to meet consistently (as a whole group and as subcommittees) over the next few months. We shall keep you all posted.

## GRAB & GO MEAL DISTRIBUTION



Grab & Go Meals will be offered on Monday, Wednesday & Friday only. There will be no Grab & Go on Tuesday or Thursday. Grab & Go runs from 10 am - 2 pm at GMS.

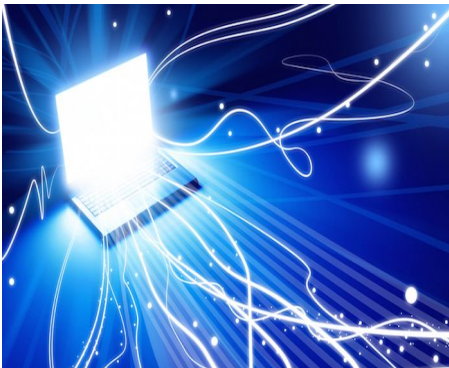
## HOW DO WE RETRIEVE PERSONAL ITEMS NOW THAT SCHOOL IS OFFICIALLY CLOSED?

We will have our plan ready to share in the next few days. Thank you for your patience.

**UPDATE**



THE LAST DAY OF SCHOOL FOR GPS STUDENTS IS **JUNE 17TH, 2020**, WHICH IS CONSISTENT WITH OUR SCHOOL YEAR CALENDAR. BECAUSE OF THE UNUSUAL SCHOOL CLOSURE PERIOD AND THE DIFFERENT END OF THE YEAR ACTIVITIES, THERE HAS BEEN CONFUSION ABOUT THE LAST DAY FOR STUDENTS. IF YOU HAVE SPECIFIC QUESTIONS, PLEASE CONTACT ONE OF OUR SCHOOLS.



## INTERNET CONNECTION

The State of Connecticut is committed to helping students and families maintain strong Internet connection during this period of school closure.

Please visit our Technology Section on our School Closure & COVID-19 Resource page to review these resourceful documents:

1. Increased Access to Internet Coverage for Connecticut Residents--[click here](#).
2. T-Mobile for Education in Connecticut--[click here](#).

## IMPORTANT INFORMATION ABOUT OUR BUILDINGS AND GROUNDS

**Our buildings are closed to the public, and we are not honoring any facilities requests at this time.**

While our grounds are open to the public for walks and jogs, groups are prohibited from gathering on campus at any time, for any reason, due to the State of Connecticut Executive Orders. In short, there should be no informal gatherings of groups of individuals (large or small) for gatherings and games. Thank you for your cooperation.





## FREE LIVE ONLINE PARENTING CLASSES

*Get started finding Peace at Home*

**STEP 1:** Choose which is best for you

- **Interactive Live Online Classes** Get answers to your questions on the spot
- **Recorded Classes** On-demand recorded versions of our live, interactive courses
- **Flash Classes** 15 minutes or less

**STEP 2:** Visit our class list page at [peaceathomeparenting.com/get-started](https://www.peaceathomeparenting.com/get-started) and review the list of upcoming classes under the type of class that best fits your schedule

**STEP 3:** Click on the **Register or Buy Now** button and complete registration questions

**STEP 4:** Enter **PEACE2020** discount code in place of payment

**That's it!** You will receive an e-mail confirmation with instructions for your next steps or a link to the class you chose. LIVE CLASSES will send reminders leading up to date of the class.

**Learn more at**  
**[PeaceAtHomeParenting.com](https://www.PeaceAtHomeParenting.com)**

**With each class you will receive:**

- Parent handouts you can download and print
- Access to our private, monitored Facebook group where you can get answers and feedback from other caring parents like yourself and Peace at Home experts
- Access to Free monthly online Q&A sessions to follow up on your new approaches

And if you sign up for a live, online class and miss it – we will send you access to a recording of that class in just a day or two.

Sponsored by  
Idols Program  
at Griswold  
Elementary School

## PEACE AT HOME RESOURCES AVAILABLE TO ALL GRISWOLD FAMILIES

The Peace at Home mission is to connect parents with inspiring experts, so that parents can easily gain the skills and support they need to build positive, peaceful and playful families.

Sign up through a smartphone, tablet or computer. Select the parenting class in the format that works for you. There are interactive, live online classes so you can ask the teacher questions on the spot. Live classes meet at a certain time on a certain day, and you receive emails to remind you to join. Or you can watch or just listen to an on-demand recorded class any time, right when you need some help.

On the run? Listen to a "Flash Class" that is 15 minutes or less. Full-length recorded classes are more in-depth and last 30–45 minutes.

Sign in information:

<https://www.peaceathomeparenting.com/idols-program/>

Subscription Code is PEACE2020



**THE CONNECTICUT STATE DEPARTMENT OF EDUCATION IS OFFERING ON-LINE OPPORTUNITIES TO SUPPORT FAMILIES DURING THIS SCHOOL CLOSURE PERIOD.**



**[Please click here](#) to learn about these opportunities. Once you arrive on the page, you will have to scroll down to explore the different offerings.**

## Social Services in Griswold

# SOCIAL SERVICES RESOURCES

**ADDITIONAL QUESTIONS?**  
**VISIT US AT: THE GRISWOLD YOUTH CENTER (GYC)**  
**68 ASHLAND STREET, JEWETT CITY - OFFICE HOURS M-F 2-5 PM**

[griswoldREC.org](http://griswoldREC.org)  
**#loveOURresidents**

**DIAL 860.376.7040 or [ucfs.org](http://ucfs.org)**  
 medical services - women's health  
 dental health - behavioral health  
 school-based health centers - eldercare  
 pharmacy - billing - insurance  
 mental health - substance use  
 case management

**DIAL 860.425.6611 or [tvcca.org](http://tvcca.org)**  
 case management services - childcare  
 preschool - employment - training  
 energy assistance - financial education  
 housing - section 8 rental assistance  
 senior nutrition program - meals on wheels  
 senior volunteer services - WIC

**DIAL 2-1-1 or 211 [ct.org](http://ct.org)**  
 food - mental health - youth  
 health care - housing - income  
 substance use - transportation  
 utility assistance - crisis  
 older & elderly assistance  
 legal assistance - re-entry

**CHILD CARE**  
 Little Log School House - (860) 376-4975  
 TVCCA Head Start - (860) 889.1365  
 Nurturing Kids Childcare Center - (860) 376-1377  
 Care 4 Kids - 1-888-214-5437  
 Birth to Three - 1-800-505-1000  
 GES Before/Aftercare: Carelot: 860-367-2313 or [carelot.net](http://carelot.net)  
 Griswold Youth Center Afterschool Club - 860.376.7026

**PARENT INFO**  
 Health Insurance : [accesshealthct.com](http://accesshealthct.com) or 1-855-805-4325  
 Eyeglasses for Children - Lisbon Lions Club on Facebook  
 Local Addiction Support Group - Matt's Mission : 860.917.6348  
 Addictive Behavior Smart Recovery - Voluntown YSB - 860.376.2226  
 Christmas Help or School Supplies @ GYC - 860.376.7026  
 Read to Grow! Free Books @ GYC - 860.376.7026  
 ComMunity Services or Internships @ GYC - 860.376.7026  
 GES Retention Referred Tutoring @ GYC - 860.376.7026  
 Car Seat Checks: American Ambulance in Norwich or L&M Hospital  
 Safe-Kids CT: [ctsafekids.org](http://ctsafekids.org)

**HOME HEATING ASSISTANCE**  
 CT DDS through TVCCA -  
 860.425.6681 or 860.889.1365 or 211 or [ct.gov/staywarm](http://ct.gov/staywarm)  
 Soldiers, Sailors & Marines Relief Fund - 860.886.8557  
 Project Warm-Up - CART or United Way - 860.464.6012  
 Salvation Army - 860.889.2329  
 Clergy Fuel Bank - 860.823.3753

**WATERFORD COUNTRY SCHOOL**  
 Outpatient Clinic for Children  
 Ages 3 to 18 - trauma - mental health - behavioral issues  
 860.886.7500 x310

**CT DEPT OF SOCIAL SERVICES**  
 SNAP - Medical - HUSKY - Family Planning  
 Cash Assistance - Medicare Savings  
 Apply for Benefits : <https://portal.ct.gov/DSS>

**ENERGY ASSISTANCE:**  
 Griswold Senior Center  
 (Intake for TVCCA) : 860.376.2604

**FOOD ASSISTANCE**  
 St. Mary's Food Pantry: 860.376.2044  
 (2&4th Tuesday of the Month 10-11 am & 3-4 pm)  
 Gemma Moran Mobile Food Pantry  
 @ St. Mary's Food Pantry (3rd Wed of Month)  
 Feed the Need - Lighthouse Church  
 @ GYC (2&4th Tuesday of the Month)

**ALL OTHER RESOURCES NOT RELATED TO YOUTH & FAMILY SERVICES CALL: TINA FALCK @ GRISWOLD SENIOR CENTER - 860.376.2604**



Griswold Elementary School

**IMPORTANT UPDATES REGARDING PRESCHOOL  
AND KINDERGARTEN REGISTRATION FOR THE  
2020-2021 SCHOOL YEAR.**

GES has moved their registration packet online. To access the packet, [please click here](#).

You can download and complete each form electronically. Then email them back to: [jcaviness@griswoldpublicschools.org](mailto:jcaviness@griswoldpublicschools.org).

Any additional documents (birth certificate, proofs of residency, drivers license, physical) may also be sent here by scanning or taking a photo.

We understand that getting your child's physical during this time may not be possible. We will still process the registration, but we will need the physical to be done before school starts in August. Please be sure to include your child's name in the subject line of each email sent. This will ensure we can easily keep everyone's packet together.

Thank you so much for your understanding and patience during this time.

**School Contact Information**

Although our schools are currently closed to the public during this school closure period, we are very much available and willing to assist you. Know that our School Nurses are also here to help. Here are the points of contact:

Griswold Elementary School  
Phone: 860-376-7610  
Joe Bordeau, Principal:  
[jbordeau@griswoldpublicschools.org](mailto:jbordeau@griswoldpublicschools.org)  
Jackie Love, Assistant Principal:  
[jlove@griswoldpublicschools.org](mailto:jlove@griswoldpublicschools.org)  
Tonia Soper, School Nurse  
[tsoper@griswoldpublicschools.org](mailto:tsoper@griswoldpublicschools.org)

Griswold Middle School  
Phone: 860-376-7630  
Glenn LaBossiere, Principal:  
[glabossiere@griswoldpublicschools.org](mailto:glabossiere@griswoldpublicschools.org)  
Louis Zubek, Assistant Principal:  
[lzubek@griswoldpublicschools.org](mailto:lzubek@griswoldpublicschools.org)  
Renee Normandie, School Nurse  
[rnormandie@griswoldpublicschools.org](mailto:rnormandie@griswoldpublicschools.org)

	<p>Griswold High School  Phone 860-376-7640  Erin Palonen, Principal  <a href="mailto:epalonen@griswoldpublicschools.org">epalonen@griswoldpublicschools.org</a>  Marceline Macrino, Assistant Principal  <a href="mailto:mmacrino@griswoldpublicschools.org">mmacrino@griswoldpublicschools.org</a>  Denise Tedeschi, School Nurse  <a href="mailto:dtedeschi@griswoldpublicschools.org">dtedeschi@griswoldpublicschools.org</a></p>
Continuous Learning Plan	<p>We continue to monitor, adjust and implement our "Continuous Learning Plan." Should you have any questions about our plan, please contact Mrs. Susan Rourke, Director of Curriculum, Instruction &amp; Assessment at <a href="mailto:srourke@griswoldpublicschools.org">srourke@griswoldpublicschools.org</a></p>
Technology	<p>All technology concerns, questions, and requests: please contact Jill Curioso at <a href="mailto:jcurioso@griswoldpublicschools.org">jcurioso@griswoldpublicschools.org</a>.</p>

We hope that you are all safe and well.

Sincerely yours,



Sean P. McKenna,  
Superintendent of Schools