

Facilities Sub-Committee Meeting
Griswold Board of Education
Griswold Middle School
Library Media Center—2nd Floor
211 Slater Avenue
Griswold, Connecticut 06351

THURSDAY,
September 28th, 2023
5:15 PM

AGENDA

1. Call to Order
2. Approval of Facilities Subcommittee Minutes—August 31st, 2023
3. Review, Discussion, and Possible Action on Capital Committee Proposals for the 2024-2025
4. Other Business that May Properly Come Before the Board
5. Adjourn

**FACILITIES SUB-COMMITTEE MEETING
GRISWOLD BOARD OF EDUCATION**

**THURSDAY,
August 31st, 2023**

DRAFT

1. A regular meeting of the Facilities subcommittee took place on Thursday, August 31st, 2023, at Griswold Middle School in the Library Media Center, located on the second floor, 211 Slater Avenue, Griswold, Connecticut. The meeting was called to order at 5:15 PM by Martin Osga, Chair of the Facilities Subcommittee.

PRESENT Martin Osga, Facilities Subcommittee Chair; and Mary Beth Malin, BOE Chair.

ALSO PRESENT Sean McKenna, GPS Superintendent of Schools; Glenn LaBossiere, GPS Director of Teaching, Learning, and Innovation; Deborah Martin, GPS Director of Fiscal & Personnel Services; and Thomas Verville, GPS Facilities Director.

ABSENT Stuart Norman, Jr. and Scott Freyer, Facilities Subcommittee Members.

2. Approval of the Facilities Subcommittee Minutes - April 15th, 2023

MOTION By Mary Beth Malin
Seconded by Martin Osga
To approve the April 25th, 2023, Facilities subcommittee minutes, as presented.
Motion unanimously carried.

3. Review, Discussion, and Possible Action on Concession Stand Naming Proposal – The Facilities subcommittee discussed the naming proposal for the concession stand and decided to move it forward to the full Board for review, discussion, and action.

MOTION By Mary Beth Malin
Seconded by Martin Osga.
To move the concession stand naming proposal to the full Griswold Board of Education for review, discussion, and action.
Motion unanimously carried.

4. Review and Discussion on Facilities Report from Facilities Department – Tom Verville and the Facilities subcommittee reviewed projects that took place over the summer and the upcoming projects to be addressed.

5. Other Business That May Properly Come Before the Committee – Nothing at this time.

6. Adjourn

MOTION By Mary Beth Malin
Seconded by Martin Osga
To adjourn the Facilities subcommittee meeting at 5:34 PM.
Motion unanimously carried.

Minutes prepared by: Sean McKenna/Robin Drobiak



Griswold Public Schools

Capital Requests

2024-2025 School Year

District Mission

Griswold Public Schools educate for excellence by ensuring our students are connected, by nurturing individual student talents, and by fostering a future-focused mindset.

District Vision

Graduates of Griswold Public Schools journey into the future as engaged citizens, effective communicators, critical thinkers, and resilient problem solvers.

NOTES:

- ☐ We are still waiting for updated quotes on a few items, and we may revisit adding items at a forthcoming meeting, given that the requests are due to the town by October 1st.

Priority/Urgency #1

Replacement Chromebooks for ¼ of the GPS Student Body

GPS has moved to be a 1:1 device since the onset of the pandemic, thereby making our school district consistent with other public school districts and private schools throughout Connecticut. As can be expected, we are at a point where we have to begin to replace our fleet. Chromebooks usually have a 4-year lifespan, and next school year will mark 4 years since we have been a 1:1 district. It is important to note that run many instructional software programs via chromebooks to help students with their learning and with their learning needs.

Estimated Cost: \$132,500.00

(APPENDIX A—see cost proposal)

Priority/Urgency #2

Fire Extinguisher Maintenance and Repair--GES

A recent inspection revealed that the fire extinguishers at all three buildings warrant maintenance and repairs. The inspection that was conducted was routine and consistent with compliance steps. The cost for the GES project exceeded the \$7,500 capital committee threshold; hence, we are including this repair in our proposals. Needless to say, the repairs for the other two buildings do not reach the threshold and therefore we will include that work in our operating budget.

ESTIMATED COST \$9,185.00

(APPENDIX B—see cost proposal)

Priority/Urgency #3

Replacing the Roofing Shingles on the Community Multi-Purpose Field Concession Stand

This proposal addresses the need to re-shingle the roof on the Community Multi-Purpose Field Concession Stand. It is our understanding that the roof is the original roof, which dates back to 1992.

ESTIMATED COST: \$8,800.00

(APPENDIX C—see cost proposal)

Priority/Urgency #4

Resurfacing the Gymnasium Floor at Griswold High School

This cost proposal covers the work to sand the existing floor in the GHS gym, refinish the newly sanded floor with all game lines, and brand-standard log. Additionally, the project would include applying 2 coats of water-based polyurethane. Because we are still waiting for an updated quote, we have added an additional 5% to the cost estimate we received in 2022.

ESTIMATED COST \$ 43,953.00

(APPENDIX D—see cost proposal)

Priority/Urgency #5

Gymnasium Divider

The gymnasium divider, which was installed in 1992 with the GHS construction project, warrants replacement. This cost estimate covers a complete replacement. Given the recent revitalization of GHS athletics and gym use, this proposal comes forward with obvious importance.

ESTIMATED COST \$17,799.00

(APPENDIX E--see cost proposal)

Priority/Urgency #6

Repairing & Filling Cracks in Campus Roadways and Parking Lots

This cost estimate covers cleaning all cracks and filling them on the roadways, parking lots, and near the ball field areas to cover our entire campus.

ESTIMATED COST \$29,300.00
(APPENDIX F—see cost proposal)

Priority/Urgency #7

Striping Campus Crosswalks and Striping

This cost estimate covers re-striping the crosswalks and curbing throughout the GPS Campus

ESTIMATED COST \$9,800.00
(APPENDIX G--see cost proposal)

Priority/Urgency #8

Repair and Seat Replacement at the Griswold High School Gymnasium

Because there are a number of damaged seats in the GHS gym, for spectator viewing, this project proposal warrants serious consideration. The cost proposal details the different color seats to be replaced in the gymnasium.

ESTIMATED COST \$25,130.00
(APPENDIX H--see cost proposal)

Priority/Urgency #9

New carpet for GHS Auditorium

This estimate covers the removal and installation of a new carpet in the GHS Auditorium. The estimate does not include furniture moves. Because we are still waiting for an updated quote, we have added an additional 5% to the cost estimate we received in 2022.

ESTIMATED COST \$25,782.87
(APPENDIX I--see cost proposal)

Priority/Urgency #10

New carpet for GHS Main Office

This estimate covers the removal and installation of a new carpet in the GHS Main Office.. The estimate does not include furniture moves. Because we are still waiting for an updated quote, we have added an additional 5% to the cost estimate we received in 2022.

ESTIMATED COST \$39,293.52
(APPENDIX J--see cost proposal)

Priority/Urgency #11

Smartboard Replacement and Upgrade Cycle 2

Last school year, we began the replacement cycle with cycle 1. That project was completed in the summer of 2022 at **\$144,048.00**. This new cycle, cycle 2, includes 30 more board replacements. The smart-boards are more interactive in nature and durable for teachers and students to maximize teaching and learning.

ESTIMATED COST \$134,344.80
(APPENDIX K--see cost proposal)

Priority/Urgency #12

Tennis Court Area

This project proposal prepared by Field Turf presents different options, with different cost ranges. Long and short, the project would fall within the range of \$615,000.00 - \$675,000.00

ESTIMATED COST \$615,000.00 - \$675,000.00
(APPENDIX L--see cost proposal)



Thank you for choosing CDW. We have received your quote.

Hardware

Software

Services

IT Solutions

Brands

Research Hub

QUOTE CONFIRMATION APPENDIX A

LISA SAWYER,

Thank you for considering CDW•G for your technology needs. The details of your quote are below. **If you are an eProcurement or single sign on customer, please log into your system to access the CDW site.** You can search for your quote to retrieve and transfer back into your system for processing.

For all other customers, click below to convert your quote to an order.

[Convert Quote to Order](#)

QUOTE #	QUOTE DATE	QUOTE REFERENCE	CUSTOMER #	GRAND TOTAL
NNTT149	9/20/2023	HP G9 INTEL	6657053	\$132,500.00

QUOTE DETAILS

ITEM	QTY	CDW#	UNIT PRICE	EXT. PRICE
HP Chromebook 11 G9 EE 11.6" Chromebook - HD - 1366 x 768 - Intel Celeron N Mfg. Part#: 3V2Y2UT#ABA Contract: Capitol Region Ed. Council-Chromebooks Only (022-G)	500	6636391	\$235.00	\$117,500.00
Google Chrome Education Upgrade Mfg. Part#: CROS-SW-DIS-EDU-NEW Electronic distribution - NO MEDIA Contract: PEPPM 2023 Product Line (Reseller)- Google (536202-023)	500	5988499	\$30.00	\$15,000.00

SUBTOTAL	\$132,500.00
SHIPPING	\$0.00
SALES TAX	\$0.00
GRAND TOTAL	\$132,500.00

PURCHASER BILLING INFO	DELIVER TO
Billing Address: GRISWOLD BOARD OF EDUCATION ACCTS PAYABLE 267 SLATER AVE JEWETT CITY, CT 06351-2533 Phone: (860) 376-7600 Payment Terms: NET 30 Days-Govt/Ed	Shipping Address: GRISWOLD BOARD OF EDUCATION JILL CURIOSO 267 SLATER AVE JEWETT CITY, CT 06351-2533 Phone: (860) 376-7600 Shipping Method: UPS Ground (2- 3 Day)
	Please remit payments to: CDW Government 75 Remittance Drive Suite 1515 Chicago, IL 60675-1515



Sales Contact Info

Tim Smith | (866) 773-7356 | timsmit@cdwg.com

Need Help?



My Account



Support



Call 800.800.4239

[About Us](#) | [Privacy Policy](#) | [Terms and Conditions](#)

This order is subject to CDW's Terms and Conditions of Sales and Service Projects at

<http://www.cdwg.com/content/terms-conditions/product-sales.aspx>

For more information, contact a CDW account manager

© 2023 CDW•G LLC, 200 N. Milwaukee Avenue, Vernon Hills, IL 60061 | 800.808.4239



encore
FIRE PROTECTION

From

Encore Fire Protection

35 Philmack Drive

Middletown CT 06457

<https://www.encorefireprotection.com/>

If you have any questions or concerns

please reach us at

servicelocation5@encorefireprotection.com

Quote No. 2047308

Type

Repair

Prepared By

Ian Lemley

Created On

07/25/2023

Valid Until

08/31/2023

Quote For

**Griswold Board of
Education**

Griswold Elementary School

303 Slater Avenue

Griswold CT 6351

860-376-7600

APPENDIX B

Description of Work

During annual extinguisher inspection, our technician reported that several extinguishers have come due for routine maintenance services at this time. Maintenances are procedures required at periodic time intervals dependent on agent type, and are required by state, local, and NFPA fire codes. For a complete schedule of required portable fire extinguisher maintenances, refer to NFPA 10: Standard for Portable Fire Extinguishers [8.1.1 & 7.3.1.2.1]

Work to be done during normal business hours.

Services to be completed

[Portable Extinguishers] Portable Fire Extinguisher - 5 lb. ABC mechanical room 1016

6yr 2023/ replace with new - repair

[Portable Extinguishers] Portable Fire Extinguisher - 5 lb. ABC 2nd floor mechanical room 1207

6yr 2023/replace with new - repair

[Portable Extinguishers] Portable Fire Extinguisher - 10 lb. ABC hallway by room 1047

6yr 2023 - repair

[Portable Extinguishers] Portable Fire Extinguisher - 5 lb. ABC mechanical room 1035

6yr 2023/replace with new - repair

[Portable Extinguishers] Portable Fire Extinguisher - 10 lb. ABC Stage by walk ramp (left)

6yr 2023 - repair

[Portable Extinguishers] Portable Fire Extinguisher - 10 lb. ABC Kitchen laundry in electrical room 1095

6yr 2023 - repair

[Portable Extinguishers] Portable Fire Extinguisher - 10 lb. ABC Basement elevator room 1300

6yr 2023 - repair

[Portable Extinguishers] Portable Fire Extinguisher - 5 lb. ABC Mechanical room 1112

6yr 2023/ replace with new - repair

[Portable Extinguishers] Portable Fire Extinguisher - 5 lb. ABC Basement mechanical room 1301 by inner door

6yr 2023/ replace with new - repair

[Portable Extinguishers] Portable Fire Extinguisher - 10 lb. ABC Hallway by receiving 1099

6yr 2023 - repair

[Portable Extinguishers] Portable Fire Extinguisher - 10 lb. ABC Faculty room 1108

6yr2023 - repair

[Portable Extinguishers] Portable Fire Extinguisher - 10 lb. ABC Hallway by school nurse 1075

6yr 2023 - repair

[Portable Extinguishers] Portable Fire Extinguisher - 10 lb. ABC 2nd Floor hallway by room 1226

6yr 2023 - repair

[Portable Extinguishers] Portable Fire Extinguisher - 10 lb. ABC hallway by mechanical room 1016

6yr 2023 - repair

[Portable Extinguishers] Portable Fire Extinguisher - 5 lb. ABC mechanical room 1023

6yr 2023/ replace with new - repair

[Portable Extinguishers] Portable Fire Extinguisher - 5 lb. ABC 2nd Floor mechanical room 1234

6yr 2023/ replace with new - repair

[Portable Extinguishers] Portable Fire Extinguisher - 10 lb. ABC Basement mechanical room 1301 by outer door

6yr 2023 - repair

[Portable Extinguishers] Portable Fire Extinguisher - 5 lb. ABC Mechanical room 1110

6yr 2023/ replace with new - repair

[Portable Extinguishers] Portable Fire Extinguisher - 10 lb. ABC Receiving room 1099

6yr 2023 - repair

[Portable Extinguishers] Portable Fire Extinguisher - 10 lb. ABC Custodial office 1100 in receiving

6yr 2023 - repair

[Portable Extinguishers] Portable Fire Extinguisher - 10 lb. ABC Basement electrical room 1302

6yr 2023 - repair

[Portable Extinguishers] Portable Fire Extinguisher - 10 lb. ABC Hallway by band 1101

6yr 2023 - repair

[Portable Extinguishers] Portable Fire Extinguisher - 5 lb. ABC Mechanical room 1124

6yr 2023/replace with new - repair

[Portable Extinguishers] Portable Fire Extinguisher - 10 lb. ABC Hallway by room 1107

6yr 2023 - repair

[Portable Extinguishers] Portable Fire Extinguisher - 10 lb. ABC 2nd Floor custodial room 1219

6yr 2023 - repair

[Portable Extinguishers] Portable Fire Extinguisher - 10 lb. ABC Storage room 1137

6yr 2023 - repair

[Portable Extinguishers] Portable Fire Extinguisher - 10 lb. ABC Kitchen dry storage room 1091

6yr 2023 - repair

[Portable Extinguishers] Portable Fire Extinguisher - 10 lb. ABC hallway by room 1009

6yr 2023 - repair

[Portable Extinguishers] Portable Fire Extinguisher - 10 lb. ABC 2nd Floor hallway by mechanical room 1234

6yr 2023 - repair

[Portable Extinguishers] Portable Fire Extinguisher - 5 lb. ABC Mechanical room 1118

6yr 2023/replace with new - repair

[Portable Extinguishers] Portable Fire Extinguisher - 10 lb. ABC Hallway by main office

6yr 2023 - repair

[Portable Extinguishers] Portable Fire Extinguisher - 10 lb. ABC Hallway by conference room 1136

6yr 2023 - repair

[Portable Extinguishers] Portable Fire Extinguisher - 10 lb. ABC Hallway by room 1123

6yr 2023 - repair

[Portable Extinguishers] Portable Fire Extinguisher - 10 lb. ABC Lobby by Media Center 1050

6yr 2023 - repair

[Portable Extinguishers] Portable Fire Extinguisher - 5 lb. ABC 2nd Floor mechanical room 1242

6yr 2023/ replace with new - repair

[Portable Extinguishers] Portable Fire Extinguisher - 10 lb. ABC hallway by room 1027

6yr 2023 - repair

[Portable Extinguishers] Portable Fire Extinguisher - 10 lb. ABC hallway by room 1001

6yr 2023 - repair

[Portable Extinguishers] Portable Fire Extinguisher - 10 lb. ABC Hallway by mech room 1110

6yr 2023 - repair

[Portable Extinguishers] Portable Fire Extinguisher - 5 lb. ABC mechanical room 1007

6yr 2023/ replace with new - repair

[Portable Extinguishers] Portable Fire Extinguisher - 5 lb. ABC Mechanical room 1130

6yr 2023/ replace with new - repair

[Portable Extinguishers] Portable Fire Extinguisher - 10 lb. ABC Storage room 1082 by receiving

6yr 2023 - repair

[Portable Extinguishers] Portable Fire Extinguisher - 5 lb. ABC mechanical room 1020

6yr 2023/ replace with new - repair

[Portable Extinguishers] Portable Fire Extinguisher - 10 lb. ABC Lobby by Media Center 1050

6yr 2023 - repair

[Portable Extinguishers] Portable Fire Extinguisher - 10 lb. ABC Stage by walk ramp (right)

6yr 2023 - repair

[Portable Extinguishers] Portable Fire Extinguisher - 10 lb. ABC Basement storage room 1304 (outside access)

6yr 2023 - repair

[Portable Extinguishers] Portable Fire Extinguisher - 5 lb. ABC mechanical room 1041

6yr 2023/replace with new - repair

[Portable Extinguishers] Location - Building

2023 maint work due:

20-5lb abc 6yr/ replace with new

45-10lb abc 6yr - repair

[Portable Extinguishers] Portable Fire Extinguisher - 5 lb. ABC mechanical room 1043

6yr 2023/replace with new - repair

[Portable Extinguishers] Portable Fire Extinguisher - 10 lb. ABC Custodial room 1140

6yr 2023 - repair

[Portable Extinguishers] Portable Fire Extinguisher - 10 lb. ABC 2nd Floor custodial room 1229

6yr 2023 - repair

[Portable Extinguishers] Portable Fire Extinguisher - 10 lb. ABC 2nd Floor hallway by elevator

6yr 2023 - repair

[Portable Extinguishers] Portable Fire Extinguisher - 10 lb. ABC custodian room 1019

6yr 2023 - repair

[Portable Extinguishers] Portable Fire Extinguisher - 5 lb. ABC electrical room 1029

6yr 2023/replace with new - repair

[Portable Extinguishers] Portable Fire Extinguisher - 10 lb. ABC Hallway by chorus 1103

6yr 2023 - repair

[Portable Extinguishers] Portable Fire Extinguisher - 10 lb. ABC Hallway by custodian room 1140

6yr 2023 - repair

[Portable Extinguishers] Portable Fire Extinguisher - 10 lb. ABC Basement hallway by elevator room 1300

6yr 2023 - repair

[Portable Extinguishers] Portable Fire Extinguisher - 5 lb. ABC 2nd floor mechanical room 1223

6yr 2023/ replace with new - repair

[Portable Extinguishers] Portable Fire Extinguisher - 10 lb. ABC 2nd floor hallway by room 1211

6yr 2023 - repair

[Portable Extinguishers] Portable Fire Extinguisher - 10 lb. ABC 2nd floor hallway by mechanical room 1242

6yr 2023 - repair

[Portable Extinguishers] Portable Fire Extinguisher - 10 lb. ABC 2nd floor hallway by room 1247

6yr 2023 - repair

[Portable Extinguishers] Portable Fire Extinguisher - 5 lb. ABC 2nd Floor electrical room 1228

6yr 2023/ replace with new - repair

[Portable Extinguishers] Portable Fire Extinguisher - 10 lb. ABC hallway by room 1039

6yr 2023 - repair

[Portable Extinguishers] Portable Fire Extinguisher - 10 lb. ABC hallway by stage door 1084

6yr 2023 - repair

[Portable Extinguishers] Portable Fire Extinguisher - 10 lb. ABC custodian room 1030

6yr 2023 - repair

[Portable Extinguishers] Portable Fire Extinguisher - 5 lb. ABC 2nd floor mechanical room 1220

6yr 2023/replace with new - repair

[Portable Extinguishers] Portable Fire Extinguisher - 10 lb. ABC hallway by room 1032

6yr 2023 - repair

GRAND TOTAL \$9,185.00

Terms and Conditions

Upon acceptance, Encore Fire Protection and/or any of its affiliates will perform work and/or furnish materials for the install, repair, or other modification to your fire protection system at the above noted property as referenced in this contract. This is a notice that Encore Fire Protection and/or any of its related affiliates who provide labor and/or materials for the install, repair, or other modification to your fire protection system for the scope of work referenced in this contract with the above-signed, may file a mechanic's lien on the property referenced above in the event of nonpayment by you to Encore Fire Protection and/or any of its affiliates.

At Encore, our mission is providing the best possible experience for our customers. With the recent increases in material costs across the global market, we have established a 7-day approval period for all proposals that include materials. After the initial 7-day period, Encore reserves the right to adjust the proposal to reflect any applicable material increases. This will serve to help us ensure you get an accurate and timely proposal without any delay in service while keeping your systems operating properly and in compliance.

By my signature below, I authorize work to begin and agree to pay the Grand Total according to the terms and conditions of this agreement.

Name: _____ Date: _____

Signature: _____



18 Brookside Drive
Plainfield, CT 06374
Tel: (860) 230-0853
www.jfkroofing.com

APPENDIX C

PROPOSAL SUBMITTED TO <u>Griswold Public Schools</u>	PHONE <u>(860) 428 9174</u>	DATE: <u>9/16/23</u>
STREET <u>211 Slater Ave</u>	JOB NAME/TYPE <u>Roof</u>	
CITY, STATE AND ZIP CODE <u>Griswold, CT</u>	JOB LOCATION (If same as owner address, write same)	

We hereby submit specifications and estimates to:

- Remove existing layer of roofing shingles and dispose of.
- Replace or install any plywood as needed at an additional labor rate of \$ 60 per 4'x8' sheet of plywood. Material cost will be billed at cost as additional.
- Install ice and water shield on all eaves and all applicable areas. (Valleys, against walls, around roof protrusions) seam tape will be applied to all remaining plywood seams and rest of roofing field will be covered with synthetic underlayment.
- Install Aluminum drip edge on all roof perimeters. ☒ White ☐ Brown
- Install GAF Pro Starters on all roof perimeters.
- Install roof pipe vent flashing.
- Install GAF Timberline High Definition Architectural Roofing Shingles. Color _____
- Install GAF Architectural Capping shingles on all applicable areas. (hips/ridges)
- Ridge vent to be installed on Vented Ridges. ☒ Yes ☐ No
- Roof is to be left water tight daily upon start of job with final detailing commencing at end of job. Work sites to be swept with rolling magnet.
- Contract price includes all labor, materials, taxes, GAF Weather Stopper System Plus Warranty, debris removal cost.
- Permit cost will be pulled and cost will be additional to proposed roofing job.
- The materials supplied are the property of JFK Roofing LLC. (We over order to prevent delays)

All remaining or leftover materials will be removed by JFK Roofing LLC. at end of the job.

Other work scope/additional: Re-Roof Football Concession Stand \$8,800

We Propose hereby to furnish material and labor - complete in accordance with the above specifications, for the sum of: Eight Thousand Eight Hundred Dollars (\$ 8,800).

Payment to be made as follows: 50 % down, 50 % plus any additional work upon completion of whole job.

Any alteration or deviations from above specifications involving extra costs will be executed only upon written order, and will become an extra charge over and above the estimate. All agreements contingent upon strikes, accidents, or delays beyond our control.

Note: We reserve the right to withdraw our proposal within seven (7) days from above date. Authorized Signature: _____

Terms and Conditions: A 1% (12% APR) late fee will be charged on all unpaid balances over 30 days. In event of default by buyer, buyer agrees to pay all costs of collection including reasonable attorney's fees in addition to other damages incurred by seller.

Acceptance of Proposal: The above prices, specifications and conditions are satisfactory and are hereby accepted. You are authorized to do the work as specified. Payment will be made as outlined above.

Owner's Signature: X _____ Date of Acceptance: _____

Owner's Signature: X _____ Date of Acceptance: _____

Acknowledgment Receipt Of NOTICE OF RIGHT TO CANCEL: You, Owner(s) are hereby notified that you may cancel this transaction at any time prior to midnight of the third business day after the date of this contract. See NOTICE OF RIGHT TO CANCEL on backside of this contract for an explanation of this right. I, we, acknowledge receipt of NOTICE OF RIGHT TO CANCEL.

Owner's Signature: X _____ Date of Acceptance: _____

Owner's Signature: X _____ Date of Acceptance: _____

APPENDIX D

BCI

Bartholomew Contract Interiors

3324 Main Street
Hartford, CT 06120
Fax 860/724-2887
Tel 860/522-5555

PROPOSAL SUBMITTED TO Griswold Public Schools	PHONE C: 860-373-4501	DATE August 18, 2022
STREET 211 Slater Avenue	JOB LOCATION Griswold High School – Gymnasium	
CITY, STATE & ZIP Griswold, CT 06351	JOB DETAIL Floor Refurbishment	PROPOSAL NUMBER 220564
ATTN: Tom Verville, Facilities Director	E-MAIL tverville@griswoldpublicschools.org	

Bartholomew Contract Interiors Is Pleased To Provide Pricing For The Following:

Labor & Materials To Sand Floor To Bare Wood, Paint All Game Lines And Logo And Apply (2) Coats
Coats Of Water-Based Polyurethane:

TOTAL = \$41,860.00

To Include:

Main Basketball – Black
Green Border 3'W Ends/2' Sides With Naturals Lettering
Center Key Logo - Green
Caddy Corner Lettering
Main Volleyball – White Lines
(2) Auxiliary Basketball – Black (Out Of Bounds And Keys Only)

Griswold To Provide The Vector File For The Griswold High School Gymnasium Mascot Logo.

Once The Vector File Is Received, BCI Can Provide A Rendering For Customer's Approval.

All Labor To Be Performed During Normal Business Hours.

PRICE As indicated above	Artie Trudelle
TERMS Net 30	
ACCEPTED BY:	

IPROPSL



APPENDIX E

PROPOSAL# 1461`

DATE: SEPTEMBER 5, 2023
EXPIRATION DATE: OCTOBER 5, 2023

Sales-Service-Installation

166 Mason Island Road
Mystic, CT 06355
Phone 203-232-0214 Fax 860-440-0628
aortiz@nefacsales.com
CT State Contract #18PSX0319

TO: Griswold Public Schools
211 Slater Avenue
Griswold, CT 06351

SALESPERSON	JOB	SHIPPING METHOD	SHIPPING TERMS	DELIVERY DATE	PAYMENT TERMS	DUE DATE
Angelo Ortiz	Griswold High School	Best Way	Purchase Order	Pending		ASAP

QTY	ITEM #	DESCRIPTION	UNIT PRICE	UOM	LINE TOTAL
1		Jaypro 25' x 90' Fold Up Divider Curtain *Final electrical hookups by others* Demo and Disposal of Existing curtain included. Shipping and Installation Included		LOT	\$17,799.00

Acceptance of Proposal The above prices, specifications and conditions are satisfactory and accepted. You are authorized to provide all items as described above.

Date of acceptance: _____ Signature: _____

Company: _____

Purchase Order Number: _____

Please include a physical copy of the purchase order for our records.

This is a PROPOSAL on the goods named, subject to the conditions noted below: Permits and Bonds are not included. Liquidated damages are not included. All Electrical work is performed by others. Installation, if quoted, is at labor rates specified. Installation, if quoted, is for work performed during normal working hours granting full un-interrupted access to the complete facility for the duration of the installation. Insurance limits are \$ 2 million, Additional limits are available for additional charges. Quote assumes no conflicts to normal attachment points. Unload of material shipment shall be the responsibility of the customer. Delivery is 6-8 weeks after approvals and field check of site conditions. Actual Field verification of site may require additional materials at additional expense.

202 Estimate

Phone (860) 885-1733
Cell (860) 334-6333

G2

APPENDIX F

1711

Asphalt Maintenance
39 Branch Hill Rd
Specialists In: Sealing - 1
Landscaping, Excavating and Small Construction

PROPOSAL SUBMITTED TO: <u>Griswold High School</u>	PHONE	DATE <u>9/18/23</u>
STREET <u>Griswold High</u>	JOB NAME <u>Cracks / striping</u>	
CITY, STATE AND ZIP CODE	JOB LOCATION <u>School</u>	

① Clean all cracks and fill with
hot pour in all roadways.

9,900-

② Clean and fill all cracks in
parking lots

9,900-

③ Clean and fill cracks in
ball field areas and roadways

9,500-

We propose to complete the above work in accordance with above specifications for the sum of: Dollars (\$)

Payment to be made in cash upon completion of work unless otherwise stated below:

There shall be a guarantee on the material and all workmanship, except that as applied to cracks. The guarantee shall be limited to the replacement of the material and application of same. Any alteration or deviation from the above specifications involving extra costs will be executed only upon written orders and will become an extra charge over and above the estimate. All agreements contingent upon strikes, accidents, or delays beyond our control.

Authorized Signature [Signature]
This proposal may be withdrawn by us if not accepted within 150 days.

Acceptance of Estimate: The above prices, specifications and conditions are satisfactory and are hereby accepted. You are authorized to do the work as specified. Payment will be made as outlined above. Legal fees and court costs incurred in the collection of monies owed to this contract will be borne by the customer.

Signature _____
Signature _____

Date of Acceptance _____

1 of 2
Estimate

Phone (860) 885-1733
Cell (860) 334-6333

Fax (860) 885-1711

Gall

Asphalt Maintenance
39 Branch Hill Road
Specialists in: Sealing - Pavir
Landscaping, Excavating

APPENDIX G

PROPOSAL SUBMITTED TO: <u>Gorswold Schools</u>	PHONE	DATE <u>9/18/23</u>
STREET	JOB NAME <u>Line Striping</u>	
CITY, STATE AND ZIP CODE	JOB LOCATION	

① Clean lines and line stripe
all stalls, stencils, cross walks
and curbing.

\$ 9,800-

* We use a State Certified Oil base
traffic paint.

We propose to complete the above work in accordance with above specifications for the sum of: Dollars (\$)

Payment to be made in cash upon completion of work unless otherwise stated below:

There shall be a guarantee on the material and all workmanship, except that as applied to cracks. The guarantee shall be limited to the replacement of the material and application of same. Any alteration or deviation from the above specifications involving extra costs will be executed only upon written orders and will become an extra charge over and above the estimate. All agreements contingent upon strikes, accidents, or delays beyond our control.

Authorized
Signature

This proposal may be withdrawn by us if not accepted

within 150 days.

Acceptance of Estimate The above prices, specifications and conditions are satisfactory and are hereby accepted. You are authorized to do the work as specified. Payment will be made as outlined above. Legal fees and court costs incurred in the collection of monies owed to this contract will be borne by the customer

Signature

Signature

Date of Acceptance



husseya
FACTORY-BACKED INSPECTION SERVICE A/C

APPENDIX H

7.2018

QUOTATION

TO: Tom Verville
Facilities Director

PROJECT: Griswold High School
267 Slater Ave
Griswold CT, 06351

DATE:	21-Sep-23	
	DESCRIPTION: Bleacher Repair	

Please accept the following quotation for the service on the above referenced project.

MATERIAL AND LABOR AS FOLLOWS ARE BAED ON OUR ANNUAL MAINTNEANCE 3/10/23:

Facilities: Main Gymnasium
Product: Interkal

Repair Description: BANKS 1 & 2

Repairs: Remove all seat on last row to to reposition Decks to sit properly
and reanchor bleacher to the wall.
Cut Last Row End Rails on both Banks 1 & 2
Replace: (3) Skirtboards 3/4" x4 1/4" x 20 Broken
(2) Frame Cross Braces Missing

Seat Replacement : (108) White Seats and (272) Green Seats are cracked
Remove crakced seats and replace with new seats

BANK 1 - Repairs & Seat Replacement	\$12,100.00
BANK 2 - Repairs & Seat Replacement	\$13,030.00

FURNISHED, DELIVERED & INSTALLED

TOTAL :	\$25,130.00
----------------	--------------------

Please Note: No Gymnasium Activities / Events While Work/Modification Is Being Performed

THIS QUOTATION IS SUBJECT TO THE FOLLOWING CONDITIONS:

1. Based on the manufacturer's standard color offerings unless otherwise noted.
2. Does not include any taxes, permits, licenses or performance bonds of any kind.
3. Pricing is based on Non-Union wages.
4. Payment terms: net 30 days
5. Freight not included unless noted otherwise.
6. The removal and disposal of used or broken items being replaced, is the sole responsibility of the owner.

Respectfully Submitted,

Tom Carissimi
Territory Sales Manager
Hussey Advantage
PH 203.757.2486
Cell 203.206.2087
tcarissimi@husseyseating.com

Please sign below and return with a formal Purchase Order form to Hussey Seating to execute this proposal. Thank you.

CUSTOMER:

DATE:

TITLE:

PUT THE POWER OF THE FACTORY TO WORK FOR YOU

38 Dyer Street Ext., North Berwick, ME 03906 T: 800.341.0401 F: 207.676.0257 advantage@husseyseating.com www.husseyseating.com/advantage doc 11.30.2017

APPENDIX I

B C I

Bartholomew Contract Interiors

3324 Main Street
Hartford, CT 06120
Fax 860/724-2887
Tel 860/522-5555

PROPOSAL SUBMITTED TO Griswold Public Schools	PHONE C: 860-373-4501	DATE August 15, 2022
STREET 211 Slater Avenue	JOB LOCATION Griswold High School – Auditorium	
CITY, STATE & ZIP Griswold, CT 06351	JOB DETAIL Carpet Tile	PROPOSAL NUMBER 220559
ATTN: Tom Verville, Facilities Director	E-MAIL tverville@griswoldpublicschools.org	

Bartholomew Contract Interiors Is Pleased To Provide Pricing For The Following:

Carpet Tile: Mohawk	Style: Learn And Live	Color: TBD
Mohawk Carpet Tile:	360 Yards x \$38.00/each	= \$13,680.00
Carpet Tile Adhesive:	3 Pails x \$149.00/Pail	= \$447.00
Ardex Feather Finish Patch:	55 Bags x \$19.50/Bag	= \$1,072.50
4" Vinyl Cove Base:	4 Boxes x \$214.80/Box	= \$859.20
Reducer:	516 Linear Feet x \$4.00/Linear Foot	= \$2,064.00
All Labor:	4 Men x 24 Hours @ \$67.00/Man/Hour	= \$6,432.00
Total		= \$24,554.70

Pricing Includes Removal Of Existing Carpet.

Pricing Does Not Include Furniture Move Services.

All Labor To Be Performed During Normal Business Hours.

Flooring State Contract #20PSX0088.

PRICE As indicated above	Artie Trudelle
TERMS Net 30	
ACCEPTED BY:	
IPROPSL	

APPENDIX J

B C I

Bartholomew Contract Interiors

3324 Main Street
Hartford, CT 06120
Fax 860/724-2887
Tel 860/522-5555

PROPOSAL SUBMITTED TO Griswold Public Schools	PHONE C: 860-373-4501	DATE August 15, 2022
STREET 211 Slater Avenue	JOB LOCATION Griswold High School – Main Office	
CITY, STATE & ZIP Griswold, CT 06351	JOB DETAIL Carpet Tile	PROPOSAL NUMBER 220558
ATTN: Tom Verville, Facilities Director	E-MAIL tverville@griswoldpublicschools.org	

Bartholomew Contract Interiors Is Pleased To Provide Pricing For The Following:

Carpet Tile: Mohawk	Style: Learn And Live	Color: TBD
Mohawk Carpet Tile:	576 Yards x \$38.00/each	= \$21,888.00
Carpet Tile Adhesive:	5 Pails x \$149.00/Pail	= \$745.00
Ardex Feather Finish Patch:	90 Bags x \$19.50/Bag	= \$1,755.00
4" Vinyl Cove Base:	13 Boxes x \$214.80/Box	= \$2,792.40
Reducer:	48 Linear Feet x \$4.00/Linear Foot	= \$192.00
All Labor:	6 Men x 25 Hours @ \$67.00/Man/Hour	= \$10,050.00
Total		= <u>\$37,422.40</u>

Pricing Includes Removal Of Existing Carpet.

Pricing Does Not Include Furniture Move Services.

All Labor To Be Performed During Normal Business Hours.

Flooring State Contract #20PSX0088.

PRICE As indicated above	Artie Trudelle
TERMS Net 30	
ACCEPTED BY:	
INPROPSL	



APPENDIX K

FROM
Ryan Given
RnB Enterprises
115 Hurley Rd
Oxford, CT 06478
www.RnBEnterprises.com

PHONE
(800) 998-8865

FOR
Griswold Public Schools

ADDRESS
211 Slater Ave
Griswold
CT 06351

PHONE
860-376-7600

TO
Jill Curioso

EMAIL
jcurioso@griswoldpublicschools.org

ADDRESS
2 North Main Street
Jewett City
CT 06351

PHONE
860-376-7600

COPY TO
Kyle Gunderman

QUOTE NUMBER
25188

DATE
September 7, 2023

VALID UNTIL
November 6, 2023 at 1:00 PM

Griswold Public Schools - Smartboard Budget Quote

Budget Quote Only

RnB will not accept a single purchase order over \$100,000.

SMART MX 75 Inch Interactive Display With IQ

Digital whiteboard. Chromium™ web browser. Easy screen sharing. SMART Board MX series has all the essentials educators need to bring the devices students love into any learning environment. Available in 65", 75" and 86" sizes with 4K Ultra HD resolution, MX series is a great value for schools that need an interactive display on a tight budget.

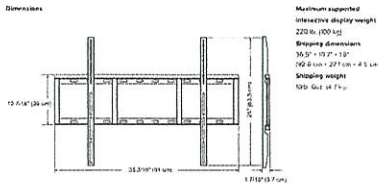
3,348.00
x 30
100,440.00



SMART Large Wall Mount For 75" or 86" Smartboards*

55.63
x 30
1,668.90

Compatible with the below models:
SMART Board MX series
SMART Board 6000 and 6000 Pro series
SMART Board 6000S and 6000S Pro series
SMART Board 7000 and 7000 Pro series
SMART Board 7000R and 7000R Pro series



50' HDMI & Active USB Cable / Wall Plate Package

272.60
x 30
8,178.00

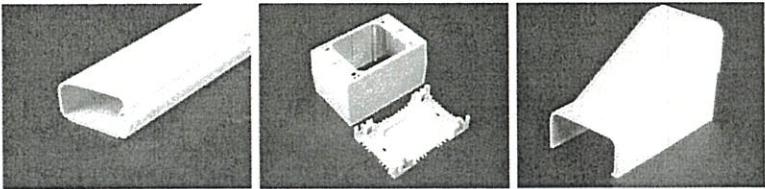
Package includes the below items:
1- 50' HDMI Cable
1- 50' Active USB Cable
1- 6' HDMI Connection Cable
1- 6' USB Connection Cable
1- Custom HDMI & USB Wall Plate



Wiremold Non-Metallic Raceway Package*

56.94
x 30
1,708.20

Co-extruded design, smooth plastic finish with adhesive backing



Installation Services

700.00
x 30
21,000.00

Installation of above products by a licensed installer



☒ **Comprehensive 6-Outlet Black Surge Protector 12Ft AC Cord**

25.00

x 30

750.00

15 amps circuit breaker/rocker switch combo with reset feature to safely shut-off overload or short circuit occurrence
Lifetime warranty



☒ **Comprehensive Displayport to HDMI female**

19.99

x 30

599.70

Keep your existing display while using a DisplayPort source. With the DP2HDJ (DisplayPort to HDMI) adapter you can connect your DisplayPort source to an HDMI display. This adapter supports resolutions up to 1920x1200 and allows you to take full advantage of your HDMI capable display.



Options selected

2 of 2

Total

\$134,344.80

State of Connecticut Certified Small Business Enterprise

We would like to thank you for giving RnB Enterprises, Inc the opportunity to quote you on the above-listed items. Our goal is to provide you with the products and information that help you succeed. Should you have any questions regarding this quote or any other A/V pricing needs, please feel free to contact me at (800) 998-8865 or email me at Ryan@rnbenterprises.com

Like us on Facebook: facebook.com/RnBCT

Follow us on Twitter: twitter.com/rnb_enterprises

Please Note: RnB has licensed E1 Electrician on staff license # ELC.0202483-E1, should you require any electrical installation to accompany your Audio-Visual needs.

The above project is non-plenum, non-prevailing wage and electrical is to be provided by others unless otherwise specified. A walkthrough (if necessary) will be scheduled once the PO has been received by RnB Enterprises.

GRISWOLD HIGH SCHOOL TENNIS COURT RENOVATIONS

SEPT. 21, 2023

Prepared For: Sean McKenna, Superintendent of Schools – Griswold Public Schools

Prepared By: Chris Hulk, PE – Director of Design and Construction, New England

Andrew Dyjak – Regional Vice President, New England

Address: Griswold High School Tennis Courts

Project Description / Assumptions:

It is assumed that the existing tennis courts at Griswold High School will be renovate to new post tension concrete courts. The existing tennis courts are in a state of disrepair and require renovation to become safe and playable. The final scope is to be determined. Two options have been provided including the renovation of the courts in their current location and a second option adding several pickleball courts.

For this project, all fencing and netting will be removed. The area surrounding the existing courts will be excavated as required to provide anchor curbing. The post tension concrete slab will then be installed. Additionally, all new netting, curbing and fencing will be included.

FieldTurf will also assist in supporting any necessary standard related design documents and attendance in up to three meetings to support the local permitting efforts. FieldTurf will supply drawing files of the field area to be used by them in the permitting efforts. Lastly, FieldTurf will review any written documents requested during the permitting process.

The proposed athletic fields are anticipated to be built in 2 – 3 month time frame, pending final scope. Additional time may be required for parking areas and facilities outside of the field limits. It is understood that adequate lay down areas will be available on the site.

Final scope and concept plans may be refined and result in revisions to the proposed pricing.

Tennis Court and Pickle Ball Court Development Areas:

Note: Excludes all work inside of post tensioned concrete slab

➤ **Removals and Sediment and Erosion Controls**

- Remove and dispose of all fencing and netting
- Maintain existing pavement to the extent available
- Install perimeter sediment and erosion controls as necessary

➤ **Site Work**

- Perform mass earthwork operations
- Cuts and fills to meet proposed subgrade
- Laser grade base
- Furnish and install new net footings, posts, nets and center straps
- Furnish and install 4-1/2" post tensioned concrete court slab
- Furnish and install black vinyl coated chain link fence
- Surface courts with up to 2 colors
- Furnish and install all court striping
- **All post tension courts come with a 25 year guarantee against any structural cracking**
- Restore site to preconstruction status

SUGGESTED PROJECT BUDGET

\$615,000 - \$675,000

➤ **Contingency**

- *A typical project of this type and scope we would suggest a contingency for design, general conditions and construction of 8% - 12%. This contingency would provide the School / Town level of safety for unknown site conditions such as rock removal, unsuitable soils, etc...*

➤ **Bid Alternate 1: Athletic Court Lighting for Tennis and Pickle Ball**

\$115,000-135,000

➤ **Assumes adequate power available within 100 linear feet of site to supply athletic field lighting**

- Supply power from nearby sources
- Furnish and install all conduits and electrical supplies
- Furnish and install concrete foundations with appropriate excavation, light poles and fixtures
- Supply controls and training support for lighting system

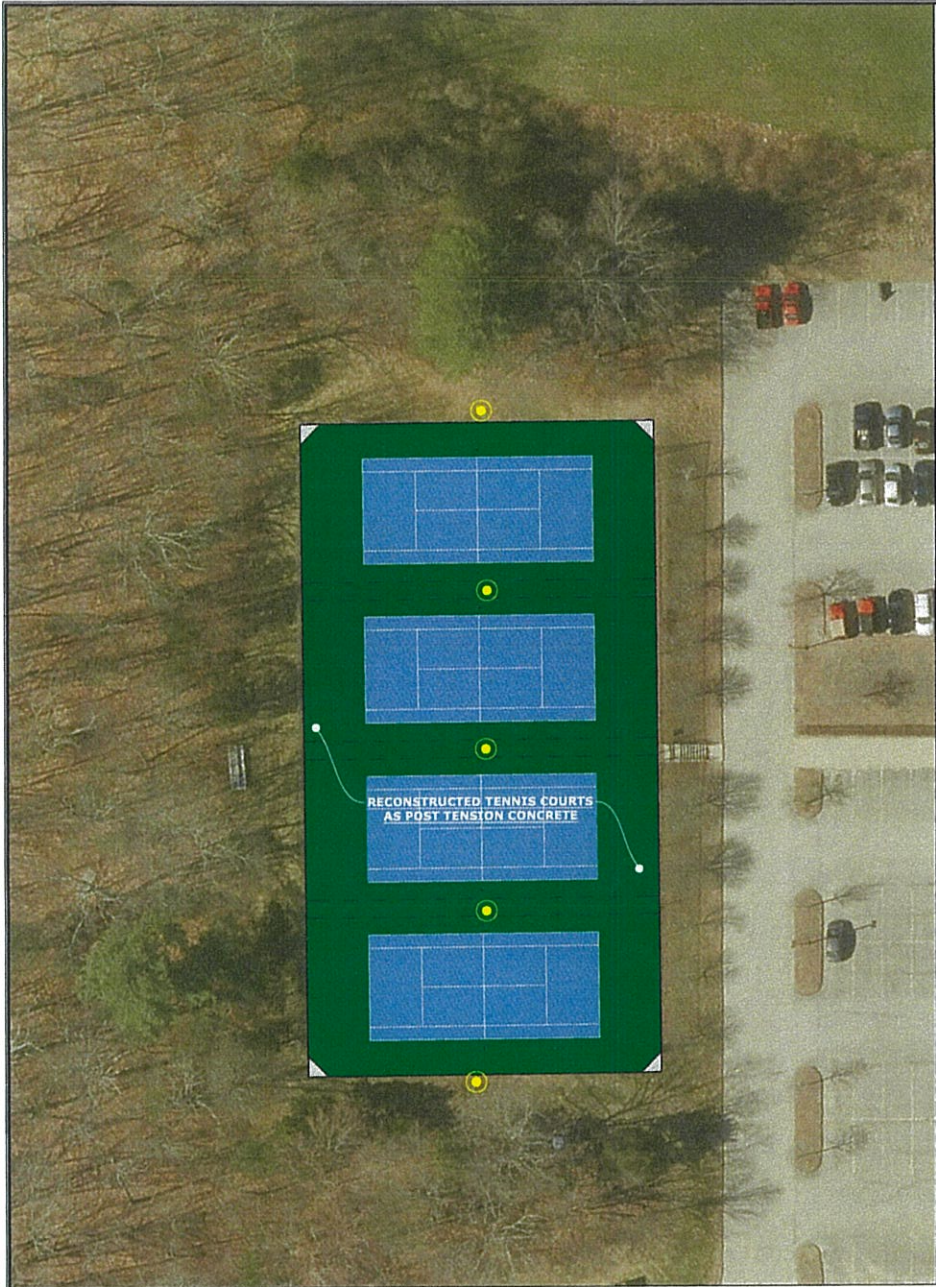
EXCLUSIONS:

- Any costs associated with necessary charges relating to the delineation of the field
- The supply of manholes or clean-outs or grates, or supply of the manhole covers
- Any alteration or deviation from specifications involving extra costs, which alteration or deviation will be provided only upon executed change orders, and will become an extra charge over and above the offered price
- Soil stabilization or remediation of any type
- Mass Excavation as required to achieve subgrade
- Rock excavation
- Offsite disposal of generated spoils
- Excavation or disposal of unsuitable or contaminated soils
- Site security
- Wetland remediation
- Once subgrade has been established, a proof roll will be performed to ensure structural stability of the soils; in the event that unsuitable soils are encountered, a price to remedy these areas can be negotiated based on recommended methods per project Engineer
- Testing or Inspection Fees
- Site restoration, sodding, landscaping or grow-in beyond disturbed areas
- Repair or resurfacing existing asphalt parking lot if damaged by truck traffic
- All union labor, prevailing wages or other labor law levies
- Bond fees and permits
- Contingency

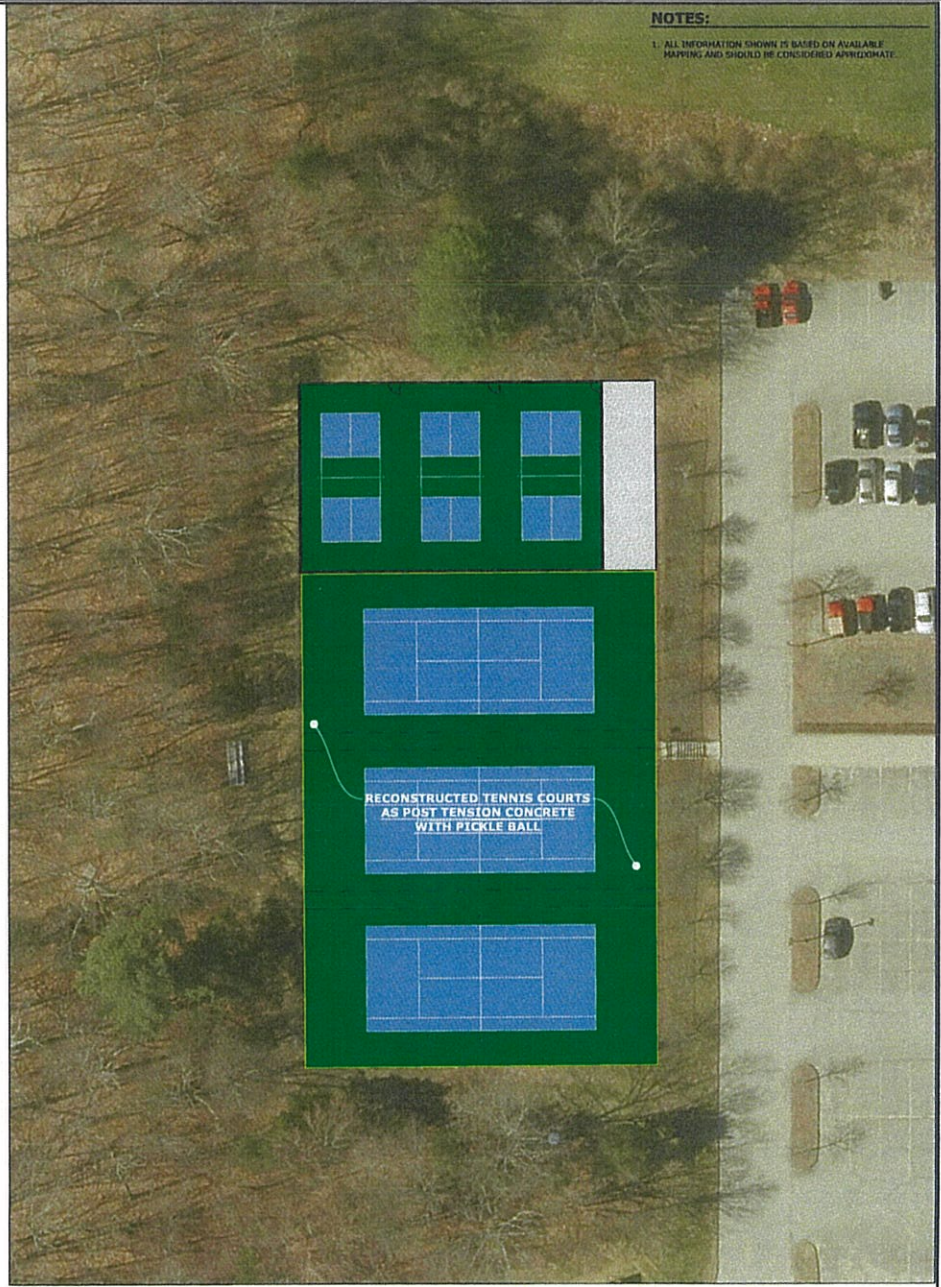
Please feel free to reach out to any member of our project team with questions about our offer:

Andrew Dyjak
Regional Vice President
(860) 333-7839
Andrew.Dyjak@Fieldturf.com

Christopher Hulk, PE
Director of Design and Construction
(203) 676-4445
Christopher.Hulk@Fieldturf.com



LAYOUT 'A'



LAYOUT 'B'

NOTES:
1. ALL INFORMATION SHOWN IS BASED ON AVAILABLE MAPPING AND SHOULD BE CONSIDERED APPROXIMATE.

CONCEPTUAL LAYOUT PLAN TENNIS COURT RECONSTRUCTION

GRISWOLD HIGH SCHOOL
STADIUM FIELD IMPROVEMENTS
267 SLATER AVENUE
GRISWOLD, CONNECTICUT

CEH
DESIGNED

CEH
CHECKED

CEH
OVERSEEN

DATE
SEPT. 21, 2023

SCALE
1"=20'

DESCRIPTION

DATE

BY

FieldTurf
A Tarkett Sports Company

1 OF 1